


راهنمای خطاهای ورود به سامانه

در مرورگر Mozilla Firefox:



مراحل نشان داده شده در تصاویر را انجام دهید.



This Connection is Untrusted

You have asked Firefox to connect securely to **sad.safahan.ac.ir**, but we can't confirm that your connection is secure.


Normally, when you try to connect securely, sites will present trusted identification to prove that you are going to the right place. However, this site's identity can't be verified.

What Should I Do?

If you usually connect to this site without problems, this error could mean that someone is trying to impersonate the site, and you shouldn't continue.

[Get me out of here!](#)

- ▶ **Technical Details**
- ▶ **I Understand the Risks**



This Connection is Untrusted

You have asked Firefox to connect securely to **sad.safahan.ac.ir**, but we can't confirm that your connection is secure.

Normally, when you try to connect securely, sites will present trusted identification to prove that you are going to the right place. However, this site's identity can't be verified.

What Should I Do?

If you usually connect to this site without problems, this error could mean that someone is trying to impersonate the site, and you shouldn't continue.

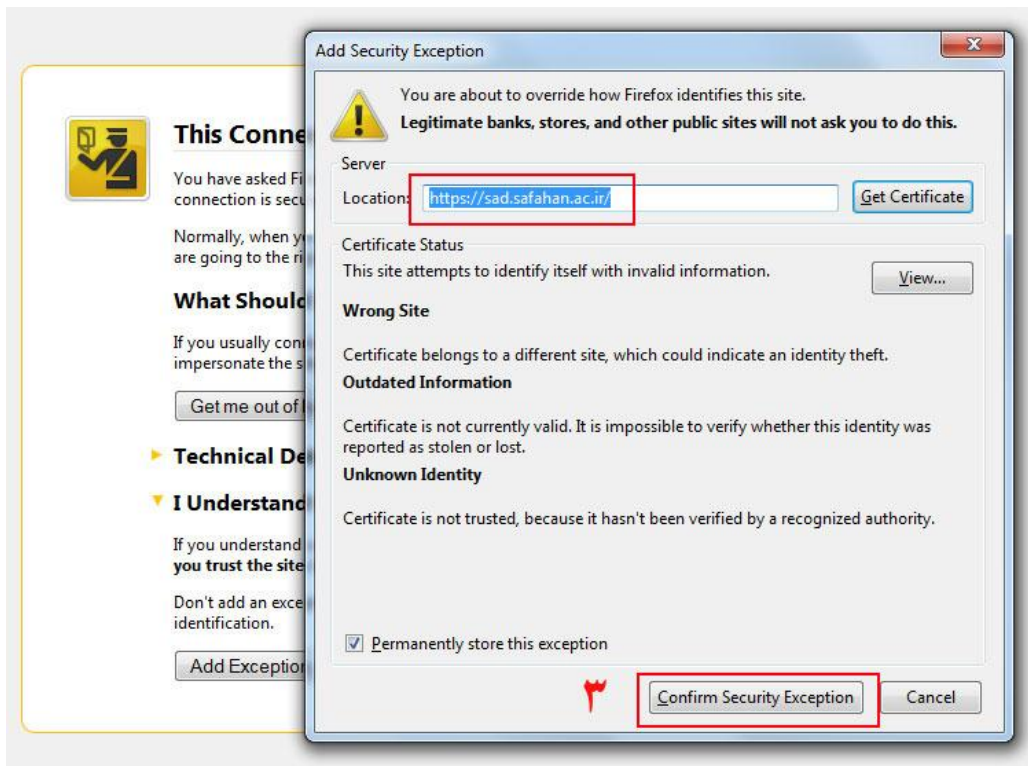
[Get me out of here!](#)

- ▶ **Technical Details**
- ▶ **I Understand the Risks**

If you understand what's going on, you can tell Firefox to start trusting this site's identification. **Even if you trust the site, this error could mean that someone is tampering with your connection.**

Don't add an exception unless you know there's a good reason why this site doesn't use trusted identification.

[Add Exception...](#)



در مرورگر Internet Explorer



بر روی گزینه نشان داده شده کلیک نمائید.

